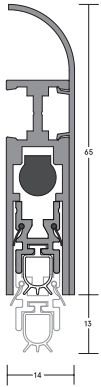


LAS8008 SI

DROP SEAL

FITTING GUIDE



LENGTH _____

CONTENTS

- LAS8008 si drop seal
- 4 x end caps
- Fixing screws
- 1 x striker button

TOOLS REQUIRED

- Tape measure
- Pencil or marker
- Saw, power or hand
- Screw driver
- Drill, power or hand
- 2.5mm drill bit
- 4mm drill bit
- Scissors, knife or snips

STEP 1

Remove the seal from the packaging and check the maximum cut back sizes.

STEP 2

Measure the distance between the door stops. At the opposite end to the actuator button, pull back the gasket and using a power/hack saw, cut the aluminium sections to the measured length, less 6mm for end caps and clearance. Remove cutting swarf/debris.

Push gasket back into position and cut to length with a sharp knife.

STEP 3

Separate (by sliding) the aluminium housing from the curved cover plate. Fit the end cap to the actuator button end and position the seal at the bottom face of the door on the stop side, button end tight up to the door stop and allowing a maximum 10mm gap (minimum 3mm) between the door bottom and the sill. Ensure the actuator button is on the hinge side.

STEP 4

Drill holes in aluminium housing then pre-drill and screw fix to the door using screws provided.

STEP 5

Re-fit the curved cover plate by sliding on to hide the screw fixing. Fit the remaining end cap and plug.

FOR TIMBER FRAMES

Position the striker button on the stop where the actuator button meets the door stop.

STEP 6

Open and close the door observing the operation of the seal. Adjust accordingly by winding the actuator button clockwise to reduce movement and anti-clockwise to increase the seal movement.

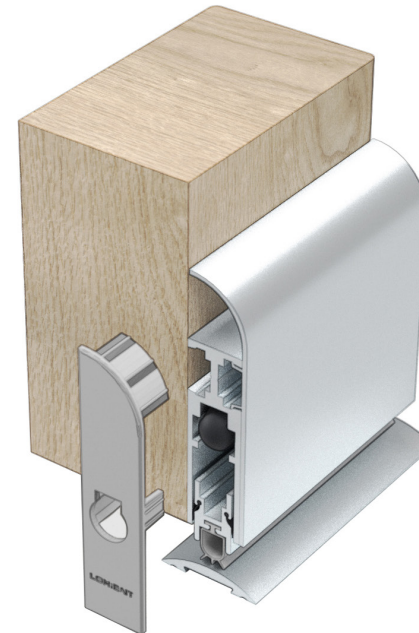
NOTE

For optimum results the seal should be adjusted so that the seals silicone gasket touches the sill in the final closing moment of the door.

NOTE

Ensure that the installation of this product does not impede the opening or closing of the door. It is recommended to check the adjustment of the door seal periodically to ensure the door assembly to which it is fitted, closes and latches properly.

We recommend LAS8008 si drop seal be used together with a Lorient perimeter seal and, if required a threshold plate.



CUT BACK SIZES

Do not cut the seal shorter than the lengths indicated below or this will affect the normal operation of the internal mechanism.

335mm cuts to 255mm
 435mm cuts to 335mm
 535mm cuts to 435mm
 635mm cuts to 535mm
 735mm cuts to 635mm
 835mm cuts to 735mm
 935mm cuts to 835mm
 1035mm cuts to 935mm
 1135mm cuts to 1035mm
 1235mm cuts to 1135mm

NOTE

Recommendations as to methods, use of materials and construction details are based on the experience and knowledge of Lorient and are given in good faith as a general guide and service to designers, contractors and manufacturers.

Lorient reserves the right to make alterations or delete any installation detail without prior notice.

V2



Lorient Polyproducts Ltd
 Endeavour House
 Fairfax Road
 Heathfield Ind Estate
 Newton Abbot
 Devon TQ12 6UD
 United Kingdom

+44 (0)1626 834252
www.lorientgroup.com

All rights reserved. No part of this fitting guide may be reproduced, stored in a retrieval system, or transmitted in any means, electronic, mechanical, photocopying, recording or otherwise without the written permission of Lorient Polyproducts Limited.
 © Lorient Polyproducts Ltd 2019